



Palmira

301.07 M² | 32.4 SQUARES

BED	BATH	LIVING	OUTDOOR LIVING	GARAGE	MPR
2	3	2	1	2	1

Palmira

301.07 M² | 32.4 SQUARES

GROUND FLOOR

BEDROOMS

Bedroom 2 3000 x 3000

LIVING AREAS

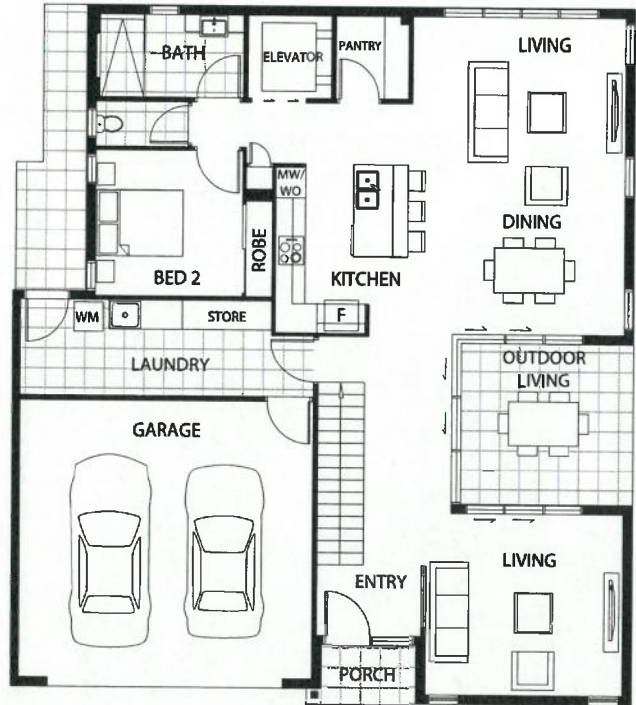
Dining / Living 6500 x 4300

Living 2 4000 x 3700

Outdoor Living 3300 x 3500

Garage 6000 x 5700

TOTAL 169.50 M²



FIRST FLOOR

BEDROOMS

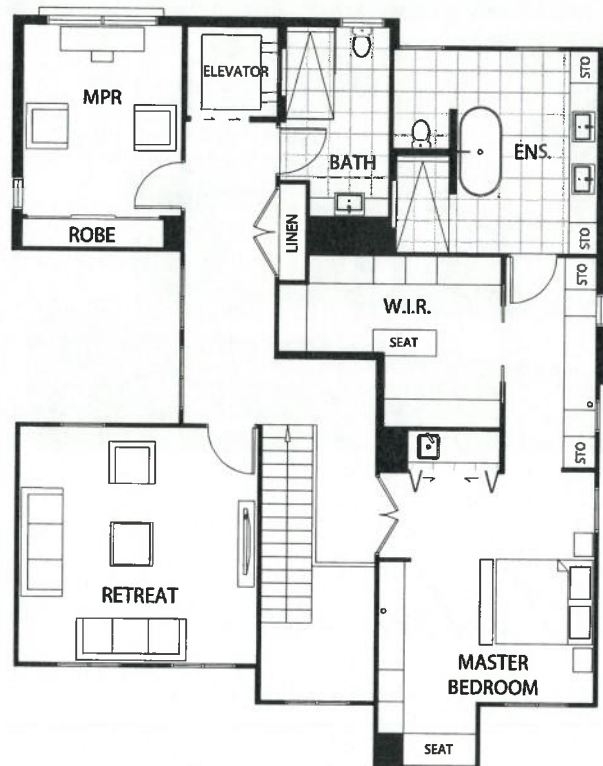
Bedroom 1 5500 x 4000

MPR 3600 x 3000

LIVING AREAS

Retreat 4500 x 4400

TOTAL 131.57 M²



TOTAL AREAS

Living Area 255.51 m²

Garage 32.4 m²

Outdoor Living 11.26 m²

Porch 1.90 m²

**TOTAL 301.07 M²
32.4 SQUARES**

